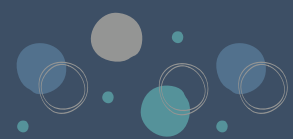




# ZEGU COLLEGE FOR LIFELONG LEARNING

PATHWAY MODULES TO DIPLOMA BY THE ZEGU COLLEGE FOR LIFELONG LEARNING (ZCLL)





➔ 2-3 Weeks Dense Modules

➔ Face-to-Face, Online (virtual) or distance class & block

➔ A set of four Christian-principled modules and a minimum of six learning area/discipline core modules will lead to the attainment of a Diploma.

## Programme

**DIPLOMA IN HUMANITARIAN AID & DISASTER MANAGEMENT**

**DIPLOMA IN GEOGRAPHIC INFORMATION SYSTEMS & EARTH OBSERVATION**

**DIPLOMA IN MIGRATION AND REFUGEE MANAGEMENT**

**DIPLOMA IN PROJECT PLANNING, MONITORING AND EVALUATION**

**DIPLOMA IN SOCIAL WORK**

**DIPLOMA IN INFORMATION SYSTEMS**

## Programme

**Christianity & Church  
Management Cluster**

## Requirements

- Certificate in Technology for Church Transformation Fundraising for Churches and Faith-Based Organisations
- Certificate in Human Resource Management for Churches and Faith-Based Organisations
- Certificate in Financial Management for Churches and Faith-Based Organisations
- Certificate in Managing Trust Accounts
- Certificate in Project Management
- Certificate in Electronic Advertising and Marketing

**Information  
Communication  
Technology &  
Management Cluster**

- Certificate in Website Creation and Management
- Certificate in Systems Software Design and Development
- Certificate in Strategic Planning for Sustainability
- Certificate in Project Management

**Social & Community Care  
Cluster**

- Certificate in Introduction to Social and Community
- Certificate in Counselling and Guidance
- Certificate in Character Building for Effective Organisation
- Certificate in Community Development and Quality of Life Enhancement

**Facilitation & Events  
Management Cluster**

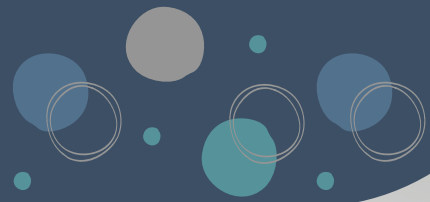
- Certificate in Event Design and Planning
- Certificate in Surveillance and Security Systems
- Certificate in Mentorship and Coaching
- Certificate in Informatics for Strategic Decision-making

**Human Capital Development  
& Management**

- Certificate in Facilitation, Skilling, and Participants Management
- Certificate in Capacity Building and Skills Enhancement
- Certificate in Quality Assurance Systems and management
- Certificate in Heritage Systems and Appreciative Inquiry
- Certificate in Academic, Professional Writing, Manuscript Review, and Editing

**LEADING TO Diploma in  
Applied Research and Policy  
Systems**





➔ 2-3 Weeks Dense Modules

➔ Face-to-Face, Online (virtual) of distance class & block

➔ A set of four Christian-principled modules and a minimum of six learning area/discipline core modules will lead to the attainment of a Diploma.

## Programme

## Requirements

### Leadership and Management Cluster

- Certificate in Grants Writing and Winning Proposals

### Creative Design for Entrepreneurship and Accountability Cluster

- Certificate in Introduction to Accounting
- Certificate in Grants Management

### Environmental Systems Planning and Management Cluster

- Certificate in Environment Chemistry and Pollution Control
- Certificate in Water Harvesting for Sustainability
- Certificate in Landscape Design and Architecture
- Certificate in Safety, Health, and Environment
- Certificate in GIS Applications
- Certificate in Smart Energy Systems

### Creativity and Art Design and Environmental Sustainability Cluster

- Certificate in Narratology (Story Writing) and Composition
- Certificate in Music Production and Team Management

### LEADING TO Diploma in Creativity and Art Design Systems

### Facilitation & Events Management Cluster

- Certificate in Event Design and Planning
- Certificate in Surveillance and Security Systems
- Certificate in Mentorship and Coaching
- Certificate in Informatics for Strategic Decision-making

### Human Capital Development & Management

- Certificate in Bioethics for Sustainability
- Certificate in Heritage Systems and Appreciative Inquiry Certificate in Environment Chemistry and Pollution Control Certificate in Bioethics for Sustainability
- Certificate in Heritage Systems and Appreciative Inquiry
- Certificate in Public Transport Management Systems
- Certificate in Travel Safety and Accidents Prevention
- Certificate in Innovation Design Engineering and Construction



# ENROLL TODAY



[www.zegu.ac.zw](http://www.zegu.ac.zw)



[admin@zegu.ac.zw](mailto:admin@zegu.ac.zw)



+263 867 700 7113

+263 779 279 912  
+263 867 700 613